

Foresight from 120 Light-Years: K2-18b’s Atmospheric Unveiling and its Transformative Implications for Advanced Sensing, AI, and Global Security

Sunil Kukreja, Ph.D. *Founder & CEO*

AetherVision, LLC

Glastonbury, CT

<https://aethervision-rd.com/>

Email: sunil@aethervision-rd.com

Abstract—The atmospheric characterization of exoplanets for biosignatures represents a pivotal frontier in contemporary astrophysics, carrying profound implications for comprehending life’s prevalence within the cosmos. The sub-Neptune exoplanet K2-18b, orbiting within the temperate habitable zone of its cool M-dwarf star K2-18, has emerged as an exceptionally compelling target for such astrobiological investigations. This manuscript synthesizes and critically appraises recent observational campaigns, primarily leveraging the transformative capabilities of the James Webb Space Telescope (JWST). These campaigns have probed K2-18b’s atmosphere for carbon-bearing molecules (CH_4 , CO_2) and, more provocatively, for potential sulfur-based biosignatures, specifically dimethyl sulfide (DMS) and dimethyl disulfide (DMDS). The presence of these organosulfur compounds is of acute astrobiological interest due to their predominantly biological origins on Earth. We rigorously examine the accumulating evidence supporting K2-18b’s classification as a “Hycean” world—a theoretical class of planet distinguished by a global water ocean mantled by a hydrogen-rich atmosphere. Recent analyses of James Webb Space Telescope (JWST) Mid-Infrared Instrument (MIRI) data suggest the presence of DMS and/or DMDS at an approximate $3\text{-}\sigma$ statistical significance, marking a notable advance from earlier, more tentative indications [1]. Nevertheless, the scientific consensus unequivocally underscores the imperative for further, higher-fidelity observational data to achieve the $5\text{-}\sigma$ “gold standard” for definitive discovery and to robustly exclude potential abiotic formation pathways [2]–[4]. Indeed, some independent analyses combining all available James Webb Space Telescope (JWST) data do not yet find statistically significant evidence for these compounds when accounting for various modeling choices [5]. Alternative planetary models, such as a gas-rich mini-Neptune lacking a distinct liquid water surface, are also subjected to critical discussion [6]–[8]. The sophisticated remote sensing techniques and complex data interpretation methodologies integral to these exoplanetary studies possess direct parallels and significant potential for cross-applicability to strategic capabilities in Intelligence, Surveillance, and Reconnaissance (ISR). This work provides a scientifically meticulous and comprehensive overview of the current understanding of K2-18b’s atmosphere, navigates the dynamic ongoing scientific discourse, and elucidates the profound implications for the search for extraterrestrial life and the concurrent advancement of global remote characterization technologies.

Index Terms—Exoplanets, K2-18b, James Webb Space Telescope (JWST), Astrobiology, Biosignatures, Hycean Worlds, Dimethyl Sulfide (DMS), Atmospheric Characterization, Remote Sensing.

I. INTRODUCTION

THE quest to identify habitable environments and unambiguous biosignatures on planets orbiting stars beyond our Sun stands as a defining scientific endeavor of the 21st century, promising insights into the potential ubiquity and diversity of life [9]. Among the diverse populations of exoplanets discovered to date, those positioned within the habitable zones of their host stars—circumstellar regions where incident stellar flux might permit surface temperatures conducive to the existence of liquid water—are prime candidates for intensive atmospheric characterization. The exoplanet K2-18b, a sub-Neptune with an estimated mass of approximately $8.6 M_{\oplus}$ and a radius of about $2.6 R_{\oplus}$, situated roughly 120 light-years from Earth in the constellation Leo, has rapidly ascended to prominence as a focal point for such investigation [10]. Its 33-day orbit around the cool M-dwarf star K2-18 squarely places it within this critical temperate zone, as artistically rendered in Figure 1.

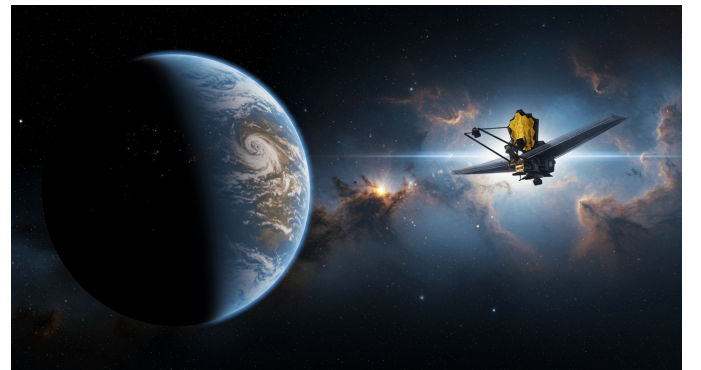


Fig. 1. An artist’s conception of the exoplanet K2-18b and the James Webb Space Telescope. This portrayal highlights K2-18b as a potentially “Hycean” world, partially illuminated by its distant cool dwarf star, with the JWST symbolizing the advanced observational capabilities enabling its study.

Initial observations, harnessing the capabilities of the Near-Infrared Imager and Slitless Spectrograph (NIRISS) and the Near-Infrared Spectrograph (NIRSpec) instruments aboard the

James Webb Space Telescope (JWST), furnished compelling evidence for key carbon-bearing molecules, notably methane (CH_4) and carbon dioxide (CO_2), within K2-18b's atmospheric envelope [10]. Critically, these pioneering observations also revealed a significant depletion of ammonia (NH_3). This specific atmospheric composition, visualized conceptually in Figure 2, lent robust support to the burgeoning hypothesis that K2-18b could exemplify a “Hycean” world. This theoretical class of exoplanet, first comprehensively detailed by [11], is characterized by a potentially planet-encircling water ocean lying beneath a substantial hydrogen-rich atmosphere. The empirical confirmation of such worlds would dramatically broaden the known spectrum of potentially habitable environments beyond Earth-like analogs. The 2023 study by [10] further ignited scientific interest and anticipation by reporting a tentative, low-significance indication of dimethyl sulfide (DMS), a volatile organosulfur compound. On Earth, DMS is overwhelmingly produced by biological processes, predominantly emanating from marine phytoplankton metabolism, rendering its potential detection on an exoplanet exceptionally noteworthy for astrobiology.

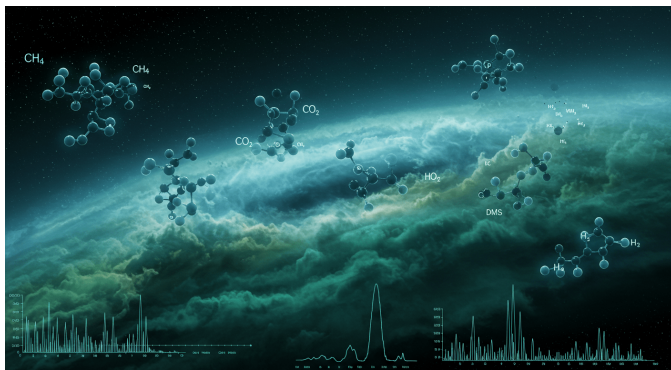


Fig. 2. Conceptual visualization of K2-18b's atmospheric molecular composition. This artistic representation integrates abstract structures of key molecules such as CH_4 , CO_2 , H_2O , and the potential biosignature DMS within the planet's hazy, hydrogen-rich atmospheric layers.

This manuscript offers an updated, critical synthesis of the rapidly evolving scientific understanding of K2-18b's atmosphere. It incorporates the latest findings from James Webb Space Telescope (JWST) observations, with particular emphasis on data acquired by the Mid-Infrared Instrument (MIRI). These MIRI data have provided strengthened, albeit still non-definitive, evidence for DMS and/or its related disulfide, dimethyl disulfide (DMDS). We will meticulously explore the ongoing, multifaceted scientific discourse concerning the true nature of K2-18b and the ultimate origins—biotic or abiotic—of these detected molecules. Furthermore, this work considers the broader, far-reaching implications of this research, extending beyond fundamental astrobiology to the cutting edge of remote sensing technologies and advanced data analysis methodologies. Such advancements bear considerable relevance to strategic technological domains, including those of acute interest to national security entities such as the Department of Defense (DoD) and the Intelligence Community (IC).

II. THE K2-18 SYSTEM AND THE “HYCEAN” WORLD PARADIGM

The K2-18 stellar system is centered on an M2.5V red dwarf star, a prevalent type of star within the Milky Way galaxy, illustrated with its planet K2-18b in Figure 3. This star is known to host at least two planets: K2-18b and K2-18c. K2-18b, the primary subject of this review, traverses its orbit with a period of approximately 33 Earth days [10]. Its calculated equilibrium temperature, assuming an Earth-like Bond albedo, positions it squarely within the host star's habitable zone, the circumstellar region where conditions might allow for liquid water on a planet's surface. The “Hycean” world paradigm, as formally articulated and quantitatively modeled by [11], proposes that sub-Neptune exoplanets possessing substantial water layers enveloped by hydrogen-dominated atmospheres can sustain liquid water oceans across a surprisingly broad range of planetary masses and incident stellar irradiation levels. The potential surface conditions of such a world are conceptualized in Figure 4. These hypothesized planets represent a novel and potentially widespread category of habitable environments, markedly distinct from the more traditionally considered Earth-like rocky planets.



Fig. 3. Artistic depiction of exoplanet K2-18b orbiting its cool M-dwarf host star, K2-18. The image emphasizes K2-18b's substantial size and potential for hosting a unique atmospheric and surface environment within its star's habitable zone.



Fig. 4. A conceptual artistic vision of the surface of a “Hycean” K2-18b, illustrating a vast, turbulent ocean beneath a thick, hydrogen-rich atmosphere. Such environments are theorized to offer potentially habitable conditions significantly different from Earth.

The principal lines of evidence derived from initial JWST observational data that support the “Hycean” classification for K2-18b include:

- (i) **Detection of Methane (CH₄) and Carbon Dioxide (CO₂):** The confirmed presence of these carbon-bearing molecules is consistent with sophisticated chemical equilibrium models of a hydrogen-rich atmosphere overlying a warm water ocean under specific, plausible temperature and pressure regimes [10].
- (ii) **Marked Depletion of Ammonia (NH₃):** Ammonia exhibits notably high solubility in liquid water. Its observed scarcity in the spectroscopically accessible upper atmosphere of K2-18b strongly suggests its preferential dissolution into a vast underlying global ocean, thereby preventing significant gaseous NH₃ concentrations from reaching altitudes probed by transmission spectroscopy [10].
- (iii) **Bulk Planetary Density:** The precisely measured mass and radius of K2-18b yield a bulk density that is intermediate between that of a purely rocky super-Earth and a typical gas-dominated mini-Neptune or Neptune itself. This derived density is compatible with a planetary composition comprising a significant water mass fraction (potentially tens of percent) and a voluminous hydrogen-helium gaseous envelope.

The tentative early detection of DMS by [10], whilst necessitating further substantiation with higher signal-to-noise data, provided an additional intriguing data point that aligns with the “Hycean” interpretation. Extensive liquid water oceans, as hypothesized for these worlds, could plausibly harbor widespread biological communities capable of producing such volatile biosignature gases, which could then outgas into the overlying atmosphere.

III. OBSERVATIONAL CAMPAIGNS AND ADVANCED DATA ANALYSIS

The atmospheric characterization of distant exoplanets such as K2-18b predominantly relies upon the highly sensitive technique of transmission spectroscopy. This observational method involves meticulous measurements of the subtle variations in light from the host star as it filters through the planet’s atmospheric limb during a planetary transit event. Different molecular species present in the exoplanet’s atmosphere absorb starlight at specific, characteristic wavelengths, thereby imprinting a unique, wavelength-dependent absorption signature onto the observed stellar spectrum.

A. Pivotal Role of the James Webb Space Telescope

The James Webb Space Telescope (JWST), with its unprecedented sensitivity and broad wavelength coverage, has been instrumental in these groundbreaking investigations, employing a suite of its advanced scientific instruments:

- **NIRISS (Near-Infrared Imager and Slitless Spectrograph) and NIRSpec (Near-Infrared Spectrograph):** These instruments provided the initial, high-fidelity transmission spectra of K2-18b across the 0.9 – 5.2 μm near-infrared wavelength range. These data facilitated the confident detection of CH₄ and CO₂, and crucially, offered

the first tantalizing, albeit low-significance, indications of DMS [10].

- **MIRI (Mid-Infrared Instrument):** Subsequent, dedicated observational campaigns have utilized MIRI’s Low-Resolution Spectroscopy (LRS) mode, which extends spectral coverage to the $\sim 5 - 12 \mu\text{m}$ mid-infrared range. This spectral window is particularly valuable for detecting and characterizing a broader array of molecular species, including various sulfur-bearing compounds whose fundamental vibrational modes often lie in this region, and for providing independent verification of molecules identified at shorter near-infrared wavelengths [1].

B. Complex Data Reduction and Atmospheric Retrieval Frameworks

The raw observational data acquired by JWST instruments undergo sophisticated and computationally intensive data reduction pipelines. These specialized pipelines are meticulously designed to correct for a variety of instrumental signatures, time-varying stellar activity effects (such as transiting starspots and faculae which can mimic or mask planetary signals), and to precisely isolate the faint planetary atmospheric transmission signal, which can be mere parts per million of the stellar flux. The resultant processed transmission spectrum is then subjected to rigorous atmospheric retrieval analyses, an artistic impression of which is shown in Figure 5. This critical interpretive step involves employing advanced computational models to simulate a vast array of plausible planetary atmospheres, systematically varying parameters such as chemical composition, vertical temperature-pressure profiles, and cloud/haze optical properties. These numerous simulated spectra are then systematically compared against the observed spectrum, typically within robust Bayesian statistical frameworks (e.g., employing nested sampling algorithms or Markov Chain Monte Carlo methods), to infer the most probable atmospheric parameters and, importantly, to quantify their associated uncertainties and degeneracies.



Fig. 5. Artistic representation of a futuristic interface displaying complex James Webb Space Telescope (JWST) spectral data from K2-18b. Prominent absorption features corresponding to detected molecules are visualized, underscoring the sophisticated data analysis integral to exoplanet atmospheric characterization.

The statistical significance of a molecular detection is frequently quantified in terms of “sigma” (σ), which represents

the number of standard deviations by which the observational data favor a model incorporating the molecule over a null hypothesis model that lacks it. For instance, a $3\text{-}\sigma$ detection implies an approximate 0.3% probability that the observed spectral features attributed to the molecule could arise from random noise or uncorrected systematic effects if the molecule were genuinely absent from the atmosphere. While encouraging and often indicative of a potential detection, the planetary science and astrophysics communities typically aspire to a $5\text{-}\sigma$ detection (corresponding to a probability of chance occurrence of ~ 1 in 3.5×10^6) for a discovery to be considered robust or definitive, particularly for extraordinary claims such as biosignatures.

The inherent complexities of these analytical techniques—managing voluminous, multi-instrument datasets; modeling poorly constrained, extreme exoplanetary environments; and robustly distinguishing subtle atmospheric signals from various astrophysical and instrumental noise sources—present formidable scientific and computational challenges. These challenges bear a striking resemblance to, and often share common mathematical underpinnings with, those encountered in advanced terrestrial and space-based Intelligence, Surveillance, and Reconnaissance (ISR). In ISR, the extraction of actionable intelligence from complex, often noisy and incomplete, sensor data is of paramount importance. Consequently, the innovative algorithms, machine learning approaches, and high-performance computing capabilities developed for astrophysical remote sensing frequently possess significant potential for adaptation and cross-application in these strategic technological domains.

IV. OBSERVATIONAL RESULTS: INSIGHTS INTO ATMOSPHERIC COMPOSITION

A. Strengthened Evidence for DMS and/or DMDS

The most recent, highly anticipated analyses focusing on James Webb Space Telescope (JWST) MIRI LRS data from K2-18b, meticulously detailed by [1], have furnished new, independent lines of evidence that support the presence of dimethyl sulfide (DMS) and/or its related sulfur compound, dimethyl disulfide (DMDS). These molecules are conceptualized in K2-18b's atmosphere in Figure 6. Salient findings from this pivotal MIRI-based investigation include:

- The MIRI transmission spectrum of K2-18b exhibits statistically significant deviations from a simple, featureless atmospheric model. Specifically, the data are inconsistent with such a null hypothesis model at a reported $3.4\text{-}\sigma$ significance when compared against the research team's more complex canonical atmospheric model developed for K2-18b [1].
- The observed spectral features within the MIRI data are best explained by the inclusion of either DMS, DMDS, or a combination of both molecules in the atmospheric retrieval model. The detection significance for this DMS and/or DMDS signal, considering all modeling factors, is reported to be approximately $3\text{-}\sigma$ [1].
- The inferred atmospheric abundance of these sulfur compounds is remarkably high, potentially exceeding 10

parts per million by volume (ppmv). This concentration is several orders of magnitude greater than typical terrestrial atmospheric DMS levels (which are in the sub-parts per billion by volume range). Intriguingly, however, such elevated abundances are broadly consistent with some theoretical predictions regarding the potential accumulation of sulfur-based biosignature gases in the anoxic, hydrogen-rich atmospheres characteristic of “Hycean” worlds [1].

While a $3\text{-}\sigma$ result constitutes a statistically noteworthy finding and substantially strengthens the earlier, more tentative hints of these organosulfur molecules, it does not yet meet the $5\text{-}\sigma$ threshold typically required for a definitive discovery in astrophysics. The authors of the study themselves prudently emphasize the critical necessity for further observational time with JWST. Such additional data would be aimed at enhancing the statistical robustness of these findings and, importantly, potentially distinguishing between the subtly different spectral signatures of DMS and DMDS [1].

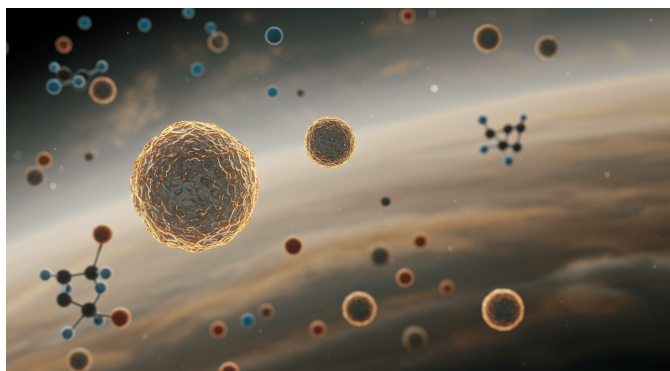


Fig. 6. A close-up, artistically enhanced microscopic view within K2-18b's atmosphere, showing Dimethyl Sulfide (DMS) and Dimethyl Disulfide (DMDS) molecules. These molecules are highlighted amidst other atmospheric gases, emphasizing their significance as potential biosignatures.

B. Sustained Consistency with “Hycean” Environmental Conditions

The continued, confident detection of abundant CH_4 and CO_2 , in conjunction with the persistent non-detection of significant NH_3 (indicative of its sequestration in a water ocean), alongside the newer MIRI results for sulfur compounds, collectively maintain a consistent and compelling picture with the “Hycean” world model for K2-18b [1], [10]. The presence of DMS and/or DMDS, if ultimately confirmed with higher confidence and robustly attributed to biological origins rather than unknown abiotic processes, would lend powerful, perhaps transformative, support to the hypothesis of a metabolically active sub-glacial or global ocean on this distant exoplanet.

V. DISCUSSION: A “HYCEAN” CANDIDATE UNDER INTENSE SCRUTINY AND ITS MULTIFACETED IMPLICATIONS

The potential detection of dimethyl sulfide (DMS) and dimethyl disulfide (DMDS) in the atmosphere of K2-18b at an approximate $3\text{-}\sigma$ significance level stands as one of the most provocative, albeit still provisional, pieces of molecular

evidence in humanity's enduring search for extraterrestrial life. On Earth, DMS is produced almost exclusively by biological organisms, with marine phytoplankton being the primary global contributors through intricate processes related to osmoregulation and the metabolic breakdown of dimethylsulfoniopropionate (DMSP). DMDS can also arise directly from biological sources or via the subsequent atmospheric oxidation of DMS. The rigorous scientific process involved in pursuing such potentially groundbreaking discoveries is often highly collaborative and data-intensive, as depicted conceptually in Figure 7.



Fig. 7. An artistic representation of diverse scientists collaborating in a high-tech environment, discussing data related to K2-18b. This image underscores the human ingenuity and teamwork essential for tackling complex scientific questions in modern astrophysics.

A. Indispensable Caveats and the Vibrancy of Scientific Debate

Notwithstanding the exhilarating nature of these recent findings, several critical caveats and areas of vigorous, ongoing scientific debate demand explicit acknowledgment and careful, objective consideration:

- **Statistical Significance and Verification:** A $3\text{-}\sigma$ detection, while statistically suggestive and warranting further investigation, falls short of the more stringent $5\text{-}\sigma$ threshold generally considered necessary for a definitive discovery, especially for a claim as profound as a potential biosignature. The established scientific method mandates independent verification, ideally by different research teams using varied analytical techniques, and the acquisition of more extensive, higher signal-to-noise observational data to substantiate such claims. Madhusudhan et al. [1] are themselves explicit in stating the pressing need for additional JWST observation time to bolster the statistical underpinnings of their current findings. Furthermore, some recent independent analyses, which jointly model the full panchromatic James Webb Space Telescope (JWST) spectrum of K2-18b (including NIRISS, NIRSpec, and MIRI data) and explore various data reduction and modeling choices, find insufficient statistical evidence for the presence of DMS or DMDS in the atmosphere. These studies suggest that approximately 25 more MIRI transits would be necessary to achieve a $3\text{-}\sigma$ rejection of a featureless spectrum relative to DMS/DMDS signals in the mid-infrared [5]. This highlights the sensitivity of such

detections to statistical methodologies and underscores the imperative for future, robust, and comprehensive data.

- **Plausibility of Abiotic Production Pathways:** While DMS and DMDS are strongly associated with biological activity on Earth, the unique and potentially extreme chemical and physical conditions hypothesized for “Hycean” worlds—or, indeed, other unforeseen categories of exoplanets—could conceivably harbor unknown abiotic (non-biological) production pathways for these sulfur compounds. Active theoretical and laboratory research into such abiotic mechanisms under diverse exoplanetary conditions is ongoing and essential. For example, DMS has been detected in the coma of comet 67P/Churyumov-Gerasimenko, demonstrating that abiotic formation is certainly possible in some astrophysical environments [2]. Recent laboratory photochemical experiments have also demonstrated the abiotic production of organosulfur gases, including DMS, suggesting that H_2S -influenced organic haze chemistry may be an overlooked abiotic source of such compounds in exoplanetary atmospheres [3]. Moreover, DMS has been identified in the interstellar medium (ISM) toward the Galactic center molecular cloud G+0.693-0.027, further confirming abiotic formation routes in astrophysical contexts [4]. These findings underscore that each organosulfur gas is at risk of being a false-positive biosignature if potential abiotic pathways are neglected [3]. While the high concentrations observed on K2-18b are difficult to explain by known abiotic or terrestrial biotic production, the existence of non-biological pathways necessitates extreme caution.
- **Viability of Alternative Planetary Models:** The interpretation of K2-18b as a “Hycean” world, while compelling and consistent with current data, is not universally accepted within the broader exoplanet scientific community. Wogan et al. [6], for example, have proposed a credible alternative model. They suggest that the observed JWST transmission spectrum of K2-18b can also be plausibly explained by a gas-rich mini-Neptune that lacks a defined global ocean or a conventionally habitable surface. Their atmospheric models indicate that thermochemical and photochemical processes occurring in a deep, hydrogen-rich atmosphere with an enhanced metallicity could adequately produce the observed CH_4 and CO_2 , and potentially generate other hydrocarbon or sulfur species that might mimic or obscure DMS/DMDS signals at the current precision of available observational data. This ongoing debate highlights the inherent degeneracy often present in exoplanet atmospheric models and underscores the critical need for more comprehensive datasets and increasingly refined, multi-faceted modeling techniques to break these degeneracies [7]. Studies on other sub-Neptunes, such as TOI-270 d, have similarly found that a model based on a giant rocky interior shrouded by a thick, hot atmosphere can explain the data better than a “Hycean” model, reinforcing the complexity of characterizing these diverse planets [8].
- **Dependence on Model Assumptions and Data Accuracy:** All atmospheric retrieval results are intrinsically

dependent upon the assumptions embedded within the computational models employed. These include the pre-defined list of potential molecular absorbers considered in the retrieval, the accuracy and completeness of their opacity data (molecular line lists and absorption cross-sections) at the specific temperatures and pressures relevant to exoplanet atmospheres, and the parameterization of complex atmospheric structures such as clouds, hazes, and aerosol layers. The continuous improvement and validation of molecular databases and atmospheric modeling frameworks remain areas of active, community-wide research.

The scientific discourse surrounding K2-18b is exceptionally dynamic and robust, with various international research consortia independently analyzing the publicly available JWST data. These groups sometimes arrive at differing nuanced conclusions regarding the statistical robustness of specific molecular detections or the fundamental nature of the planet itself. This rigorous, iterative process of hypothesis formulation, observational testing, peer-reviewed claim, critical evaluation, and further investigation forms the very bedrock of scientific progress and is essential for building reliable knowledge.

B. Profound Implications for Astrobiology

Should the presence of DMS and/or DMDS on K2-18b be unequivocally confirmed through future, higher-confidence observations, and if their origin can then be robustly attributed to biological processes rather than any plausible abiotic chemistry, this discovery would undoubtedly constitute a watershed moment in human history and scientific endeavor. It would provide the first strong, molecularly-based evidence of extant life beyond Earth, thereby revolutionizing our understanding of our place in the universe and the potential for life to arise and thrive on other worlds. Such a finding would also empirically validate the “Hycean” world concept as a viable and potentially widespread category of habitable environment, significantly energizing and guiding the search for life on similar exoplanets throughout the Milky Way galaxy. Furthermore, recent theoretical work has explored the prospects for biological evolution on “Hycean” worlds, indicating that a wide range of evolutionary rates and origination times are possible for unicellular life in oceanic environments depending on subtle variations in thermodynamic conditions [12]. However, it is crucial to maintain scientific objectivity: even if these specific sulfur molecules are later attributed to non-biological processes, or if their detection fails to achieve higher statistical significance upon further scrutiny, the intensive study of K2-18b remains immensely valuable. It relentlessly pushes the boundaries of our comprehension of planetary formation, atmospheric chemistry under exotic conditions, and the sheer, unanticipated diversity of planetary environments that the cosmos can produce.

C. Strategic Relevance to Advanced Sensing and National Security

The sophisticated technological infrastructure and advanced analytical capabilities being developed, refined, and demonstrated in the study of distant exoplanets like K2-18b possess profound and multifaceted implications that extend well beyond the confines of fundamental astrophysics. The ability to:

- Detect, identify, and quantify trace gases and thereby characterize complex atmospheric compositions from interstellar distances using exceedingly faint electromagnetic signals across wide spectral ranges.
- Develop, validate, and deploy highly sophisticated algorithms for advanced data processing, noise reduction, systematic effect mitigation, and the extraction of subtle, information-rich signals from state-of-the-art sensor suites (such as those integral to the operational success of the James Webb Space Telescope (JWST)).
- Model, simulate, and interpret environmental conditions in extreme, poorly understood, and physically remote locales where direct in-situ measurements are currently infeasible.

These burgeoning capabilities are directly analogous, and in some critical instances readily transferable, to pressing requirements in national and global security, particularly within entities such as the Department of Defense (DoD) and the Intelligence Community (IC). Potential areas of high-impact application include, but are not limited to:

- **Remote Sensing and ISR:** Significantly enhancing capabilities for the standoff detection and detailed characterization of chemical, industrial, or effluent signatures relevant to critical areas such as non-proliferation monitoring, counter-terrorism operations, international treaty verification, and comprehensive environmental security.
- **Hyperspectral and Multi-Spectral Data Analysis:** Driving advancements in techniques for rapidly and accurately processing and interpreting complex, high-dimensional data from airborne or spaceborne hyperspectral and multi-spectral sensors. This aims to identify specific materials, activities, or subtle anomalies of interest with greater fidelity, reduced false alarm rates, and increased operational speed.
- **Artificial Intelligence and Machine Learning (AI/ML):** The Bayesian inference techniques, complex statistical modeling frameworks, and large-scale data assimilation methods routinely employed in exoplanet atmospheric science are at the vanguard of modern AI/ML development. These sophisticated approaches are broadly applicable to a wide array of pattern recognition, anomaly detection, predictive analysis, and decision support tasks that are critical to national security objectives.

The synergistic relationship between fundamental scientific exploration and applied technological advancement is profound. The advanced methodologies, computational tools, and analytical insights honed in the quest to understand distant worlds can directly inspire and catalyze the development of novel, next-generation solutions for complex terrestrial challenges, thereby significantly enhancing national capacity within entities such as the U.S. Intelligence Community (IC) and Department of Defense (DoD) to anticipate, understand, and effectively respond to emerging global threats and opportunities (conceptualized in Figure 8).

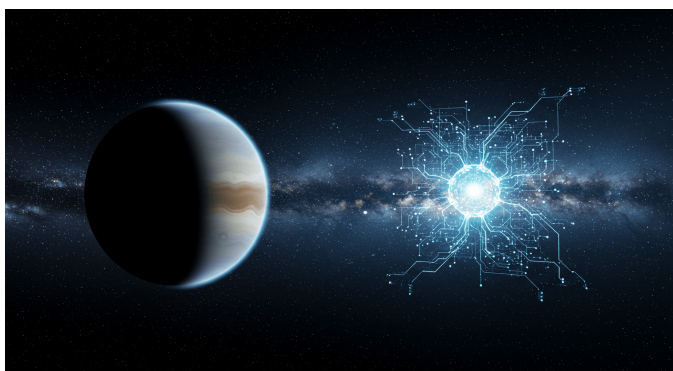


Fig. 8. Symbolic imagery illustrating the nexus between cosmic exploration (represented by K2-18b) and advanced technological development, particularly in sensing and data analysis.

VI. ANTICIPATED OUTCOMES AND FUTURE DIRECTIONS

The current state of knowledge regarding K2-18b, while exceptionally tantalizing and scientifically stimulating, unequivocally underscores the necessity for continued, rigorous, and intensified investigation. Future research efforts, leveraging both existing and next-generation observational assets and analytical techniques, are anticipated to yield critical advancements and resolve ambiguities in several key areas:

- (a) **Enhanced Statistical Confirmation of Potential Biosignatures:** Dedicated, extensive James Webb Space Telescope (JWST) observing campaigns, particularly utilizing the MIRI and NIRSpec instruments for multiple transit events, are expected to significantly improve the signal-to-noise ratio of K2-18b's transmission spectrum. This enhancement could potentially elevate the detection significance of DMS and DMDS beyond the coveted $5\text{-}\sigma$ threshold, thereby providing robust, unambiguous confirmation of their presence. Such high-quality data may also enable the clear spectroscopic differentiation between DMS and DMDS, or even facilitate the detection of other, less abundant sulfur compounds or related metabolic byproducts.
- (b) **Rigorous Constraining of Abiotic Production Scenarios:** More precise atmospheric abundance measurements for all detected species, potentially coupled with improved isotopic ratio determinations for key elements (e.g., sulfur, carbon, oxygen, if technically feasible with future instrumentation), will provide crucial empirical data for constraining abiotic production models. Concurrently, targeted laboratory experiments meticulously simulating K2-18b's likely atmospheric conditions (e.g., temperature structure, pressure profile, incident UV radiation field, elemental abundances, catalyst availability) will be essential for accurately quantifying potential abiotic yields of DMS, DMDS, and any confounding molecular species, thereby critically assessing the likelihood of non-biological origins [2]–[4].
- (c) **Refinement of Planetary Structure and Atmospheric Models:** Higher fidelity transmission and emission spectra, ideally covering an even broader wavelength range, will enable more tightly constrained and less degenerate

atmospheric retrieval analyses. This will lead to refined temperature-pressure profiles, more accurate and precise molecular abundances, and significantly better characterization of cloud, haze, and aerosol properties (e.g., composition, particle size distribution, vertical extent). These improvements will, in turn, help to discriminate more definitively between the “Hycean” world model and alternative structural scenarios, such as a gas-rich mini-Neptune [6]–[8]. The potential detection of additional, previously unconfirmed molecules (e.g., specific hydrocarbons, nitriles, or other sulfur-bearing species) could further elucidate the dominant chemical and photochemical pathways at play in K2-18b's atmosphere.

- (d) **Systematic Search for a Wider Range of Biosignatures:** Beyond organosulfur compounds, future observational strategies may target other potential biosignatures that could plausibly be present in a “Hycean” environment, such as CH_3Cl , N_2O , or PH_3 , depending on the dominant biochemistry hypothesized for putative life on such worlds. The confident detection, or robust upper limits on the absence, of these compounds will add further crucial layers to our understanding of K2-18b's potential biology and atmospheric disequilibrium.
- (e) **Development of Comparative Hycean Planetology:** As an increasing number of sub-Neptunes residing in the habitable zones of their host stars are characterized by JWST and future dedicated exoplanet observatories (e.g., the European Space Agency's Ariel mission, and concepts like HabEx/LUVOIR), K2-18b will serve as a critical benchmark and archetype. Comparative studies across a statistically significant sample of such objects will reveal whether its observed properties are typical or unusual for potential “Hycean” worlds, providing invaluable insights into the formation mechanisms, evolutionary pathways, and overall prevalence of habitability for this intriguing class of planet throughout the galaxy [12].
- (f) **Stimulation of Novel Biosignature Research and Frameworks:** The intense scientific focus on K2-18b is already acting as a powerful catalyst, stimulating new theoretical and experimental research into novel, non-Earth-centric biosignatures that might be detectable in hydrogen-rich atmospheres. This vital work is poised to significantly expand the toolkit and conceptual frameworks for life detection beyond familiar Earth-analog scenarios, broadening our search for life in the cosmos.

Successfully achieving these multifaceted outcomes will not only profoundly deepen our understanding of K2-18b itself but will also significantly advance the broader interdisciplinary field of astrobiology and the sophisticated methodologies required for comprehensively characterizing potentially habitable exoplanets.

VII. CONCLUSION AND OUTLOOK

The ongoing, intensive investigation of the exoplanet K2-18b by the James Webb Space Telescope (JWST) has demonstrably ushered in a new and exciting era of exoplanetary atmospheric science. These efforts have yielded compelling, though as yet non-definitive, evidence suggesting that K2-18b may indeed be

a “Hycean” world, a new class of potentially habitable planet. Its atmosphere clearly contains methane and carbon dioxide, and recent, sophisticated analyses of MIRI data strongly suggest the presence of the potential biosignature gases dimethyl sulfide (DMS) and/or dimethyl disulfide (DMDS) at an approximate 3- σ statistical significance [1]. This confluence of findings firmly positions K2-18b as one of the most astrobiologically significant exoplanets currently known and a prime target for continued study. Nevertheless, the scientific community, adhering to the essential principles of rigorous verification and intellectual caution, maintains an appropriately circumspect stance. There is a clear and widespread consensus on the imperative for further, more sensitive observations. Such observations are deemed critical to achieve higher statistical confidence in these tentative detections, to exhaustively explore all plausible abiotic production mechanisms for the observed molecules [2]–[4], and to critically test alternative planetary models that might explain the available data without invoking a habitable global ocean [6]–[8]. It is also crucial to note that some independent analyses of the combined James Webb Space Telescope (JWST) data do not yet find statistically significant evidence for these potential biosignatures when accounting for various modeling choices [5].

The path forward in the comprehensive study of K2-18b and similar exoplanetary systems will undoubtedly involve a multi-pronged approach, integrating:

- **Sustained and Enhanced JWST Observations:** Dedicating significant additional James Webb Space Telescope (JWST) observing time to K2-18b is paramount. This will enable the acquisition of higher signal-to-noise spectra across multiple transit events, which is crucial for improving the precision of molecular abundance measurements, definitively confirming or refuting tentative detections, and potentially identifying new, diagnostically important atmospheric species.
- **Next-Generation Atmospheric Modeling and Retrieval:** Continuous development and refinement of increasingly sophisticated atmospheric retrieval codes are essential. These advanced models must incorporate an ever-wider range of relevant physical and chemical processes, utilize the most up-to-date and accurate molecular line data, and employ more robust and physically motivated parameterizations for complex, three-dimensional phenomena such as atmospheric dynamics, cloud microphysics, haze formation, and potential photochemical or geological disequilibrium chemistry.
- **Dedicated Laboratory Astrophysics and Theoretical Chemistry Investigations:** Focused laboratory experiments and first-principles (ab initio) theoretical calculations are urgently needed to comprehensively understand the formation pathways, stability characteristics, and destruction mechanisms (both biotic and abiotic) of candidate biosignature gases like DMS and DMDS under the specific environmental conditions predicted for “Hycean” worlds and other non-Earth-like planetary atmospheres [2]–[4].
- **Expansion of Comparative Exoplanetology Programs:** The systematic observational study and detailed characterization of a broader statistical sample of sub-Neptunes and

potential “Hycean” candidates by JWST and future, even more capable, observatories will be crucial for effectively contextualizing K2-18b. Such comparative studies will illuminate the full diversity of these fascinating objects and provide profound insights into the commonality of conditions conducive to habitability across the galaxy [12].

- **Stimulation of Novel Biosignature Research and Frameworks:** The intense scientific focus on K2-18b is already acting as a powerful catalyst, stimulating new theoretical and experimental research into novel, non-Earth-centric biosignatures that might be detectable in hydrogen-rich atmospheres. This vital work is poised to significantly expand the toolkit and conceptual frameworks for life detection beyond familiar Earth-analog scenarios, broadening our search for life in the cosmos.

The ambitious exploration of K2-18b serves as a powerful testament to humanity’s innate capacity for discovery, relentlessly pushing the boundaries of telescope technology, sophisticated data analysis, and our fundamental comprehension of what constitutes a habitable planet beyond Earth. The scientific and technological innovations spurred by this profound quest have far-reaching implications, resonating with and often driving advancements in fields critical for broader technological leadership and global security. These insights are poised to profoundly benefit broader technological leadership and global security by inspiring the development of next-generation solutions for a more secure and comprehensively understood world.

ACKNOWLEDGMENTS

This manuscript conceptually builds upon the extensive body of publicly available research conducted by numerous dedicated scientists and supported by international space agencies, notably NASA, ESA, and CSA, whose collective efforts culminated in the successful development and operation of the James Webb Space Telescope. The author gratefully acknowledges the profound contributions of the various research teams whose published work forms the essential basis of this synthesis and critical review. All images within this manuscript were generated using ImageFX.

REFERENCES

- [1] N. Madhusudhan, S. Constantinou, M. Holmberg, S. Sarkar, A. A. A. Piette, and J. I. Moses, “New Constraints on DMS and DMDS in the Atmosphere of K2-18 b from JWST MIRI,” *The Astrophysical Journal Letters*, vol. 983, no. 2, p. L40, apr 2025. [Online]. Available: <https://doi.org/10.3847/2041-8213/adc1c8>
- [2] N. Hänni, K. Altwegg, H. Balsiger, S. A. Fuselier, N. F. Combe, F. J. S. van der Wiel, M. Rubin, C. Bertin, A. Bieler, K. J. Breitenbach, J.-J. Berthelier, U. Mall, A. Rettenecker, M. Simon, and I. Thiemann, “Is dimethylsulfide a robust biosignature? Evidence of abiotic production in the coma of 67P/Churyumov-Gerasimenko,” *Astronomy & Astrophysics*, vol. 681, p. A119, 2024. [Online]. Available: <https://doi.org/10.1051/0004-6361/202347620>
- [3] N. W. Reed, S. N. Johnson, P. B. Wozniak, E. M. K. P. Maejima, and N. J. Lewis, “Abiotic Production of Dimethyl Sulfide, Carbonyl Sulfide, and Other Organosulfur Gases via Photochemistry: Implications for Biosignatures and Metabolic Potential,” *The Astrophysical Journal Letters*, vol. 973, no. 1, p. L6, sep 2024. [Online]. Available: <https://doi.org/10.3847/2041-8213/ad74da>
- [4] N. Sanz-Forcada, D. C. M. A. C. Ribeiro, V. J. Herrero, I. Jiménez, J. A. Zotes, and B. Alverca, “Gas-phase formation routes of dimethyl sulfide

- in the interstellar medium,” *Astronomy & Astrophysics*, vol. 685, p. A187, 2025. [Online]. Available: <https://doi.org/10.1051/0004-6361/202449080>
- [5] C. N. Luu, H. Wakeford, and R. H. R. Madjo, “Insufficient Evidence for DMS and DMDS in the Atmosphere of K2-18 b,” *Preprint. Subject to peer review.*, 2025. [Online]. Available: <https://arxiv.org/abs/2505.07474>
 - [6] N. F. Wogan, N. E. Batalha, K. J. Zahnle, J. Krissansen-Totton, S.-M. Tsai, and R. Hu, “JWST Observations of K2-18b Can Be Explained by a Gas-Rich Mini-Neptune with No Habitable Surface,” *The Astrophysical Journal Letters*, vol. 963, no. 1, p. L7, mar 2024. [Online]. Available: <https://doi.org/10.3847/2041-8213/ad2616>
 - [7] F. E. Rigby, L. Pica-Ciamarra, M. Holmberg, N. Madhusudhan, and S. Constantinou, “Toward a Self-Consistent Evaluation of Gas Dwarf Scenarios for Temperate Sub-Neptunes,” *The Astrophysical Journal*, vol. 975, no. 1, p. 21, oct 2024. [Online]. Available: <https://doi.org/10.3847/1538-4357/ad011b>
 - [8] C. R. Glein, J. J. Fortney, M. H. Wong, and D. P. Glavin, “Thermodynamic and Geochemical Constraints on the Formation and Composition of the TOI-270 Planetary System: A Case Study for TOI-270 d,” *The Astrophysical Journal*, vol. 984, no. 2, p. 89, apr 2025. [Online]. Available: <https://doi.org/10.3847/1538-4357/ad2d19>
 - [9] S. Seager, *Exoplanet Atmospheres: Physical Processes*, ser. Princeton Series in Astrophysics. Princeton, NJ: Princeton University Press, 2010.
 - [10] N. Madhusudhan, S. Sarkar, S. Constantinou, M. Holmberg, A. A. A. Piette, and J. I. Moses, “Carbon-bearing Molecules in a Possible Hycean Atmosphere,” *The Astrophysical Journal Letters*, vol. 956, no. 1, p. L13, oct 2023. [Online]. Available: <https://doi.org/10.3847/2041-8213/acf577>
 - [11] N. Madhusudhan, A. A. A. Piette, and S. Constantinou, “Habitability and Biosignatures of Hycean Worlds,” *The Astrophysical Journal*, vol. 918, no. 1, p. 1, aug 2021. [Online]. Available: <https://doi.org/10.3847/1538-4357/abfd9c>
 - [12] E. G. Mitchell and N. Madhusudhan, “Prospects for Biological Evolution on Hycean Worlds,” *The Astrophysical Journal*, vol. 980, no. 2, p. 90, feb 2025. [Online]. Available: <https://doi.org/10.3847/1538-4357/ad1a51>